



Singapore Advanced Research and Education Network

www.singaren.net.sg

ipv6.singaren.net.sg

By

A/Prof. Francis Lee Bu Sung

E-mail: ebslee@ntu.edu.sg

Background

- **SingAREN** is Singapore's research and education network.
 - Incorporated in 2003 as a non-profit society
 - Funded by members' subscriptions & NRF (National Research Foundation) project funding
- SingAREN advocates and champions advanced network applications and technology in Singapore
- Provides dedicated local & international networks for Singapore's research and education community



SingAREN Members

Government, Institutes, Industries

NATIONAL RESEARCH FOUNDATION
PRIME MINISTER'S OFFICE
SINGAPORE

 Agency for
Science, Technology
and Research
SINGAPORE

 National
Supercomputing
Centre
SINGAPORE

 amazon
web services

 sea
connecting the dots

 Check Point
SOFTWARE TECHNOLOGIES LTD

 HUAWEI

 Singtel

 Bruhaas

 TERRABIT
NETWORKS
We connect. We transform.

Universities

 NUS
National University
of Singapore

 NANYANG
TECHNOLOGICAL
UNIVERSITY

 SMU
SINGAPORE MANAGEMENT
UNIVERSITY

 SUTD
SINGAPORE UNIVERSITY OF
TECHNOLOGY AND DESIGN

 SIT
SINGAPORE
INSTITUTE OF
TECHNOLOGY

 SUSS
SINGAPORE UNIVERSITY
OF SOCIAL SCIENCES

 INSEAD
The Business School
for the World®

Polytechnics & International Schools

 NYP
Nanyang
Polytechnic

 SINGAPORE
POLYTECHNIC

 REPUBLIC
POLYTECHNIC

 UWC
SOUTH EAST
ASIA

 NEXUS
INTERNATIONAL
SCHOOL
SINGAPORE

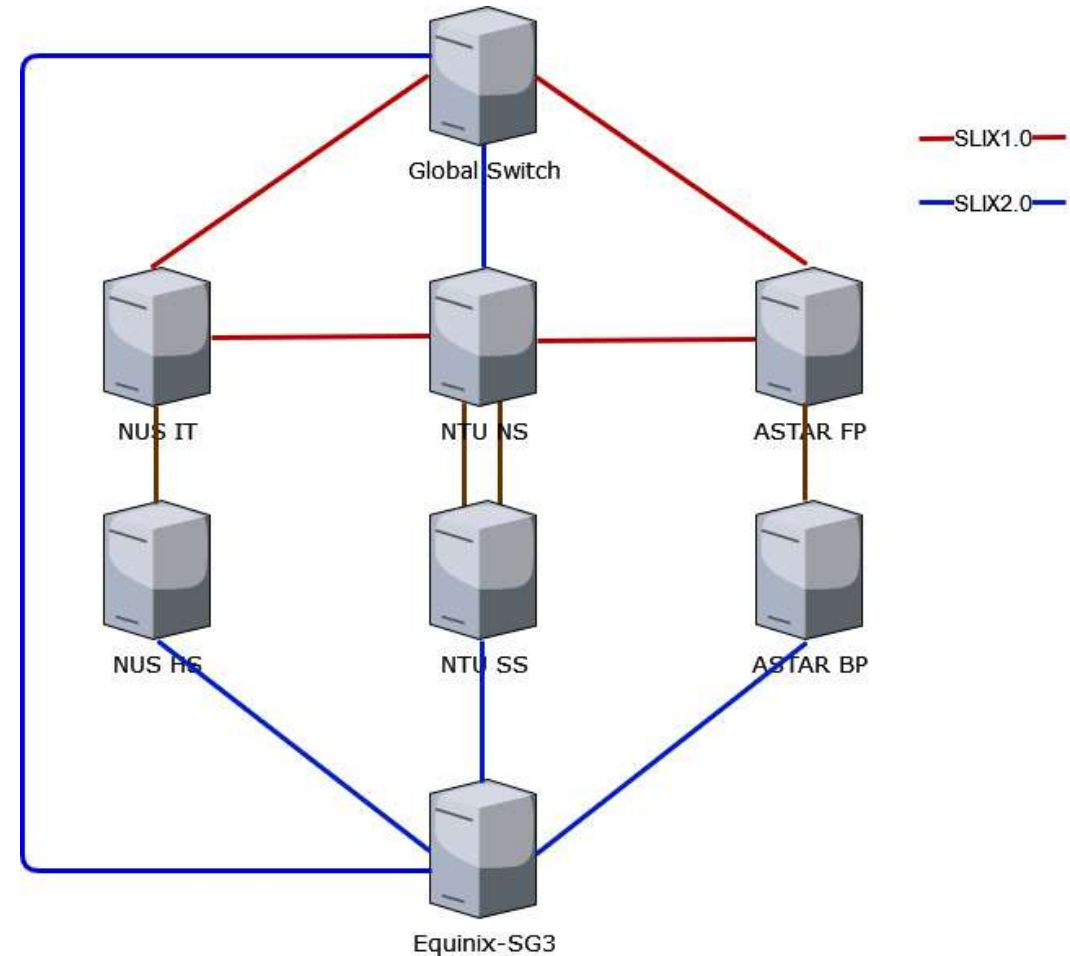
 SingAREN

SingAREN Partners:

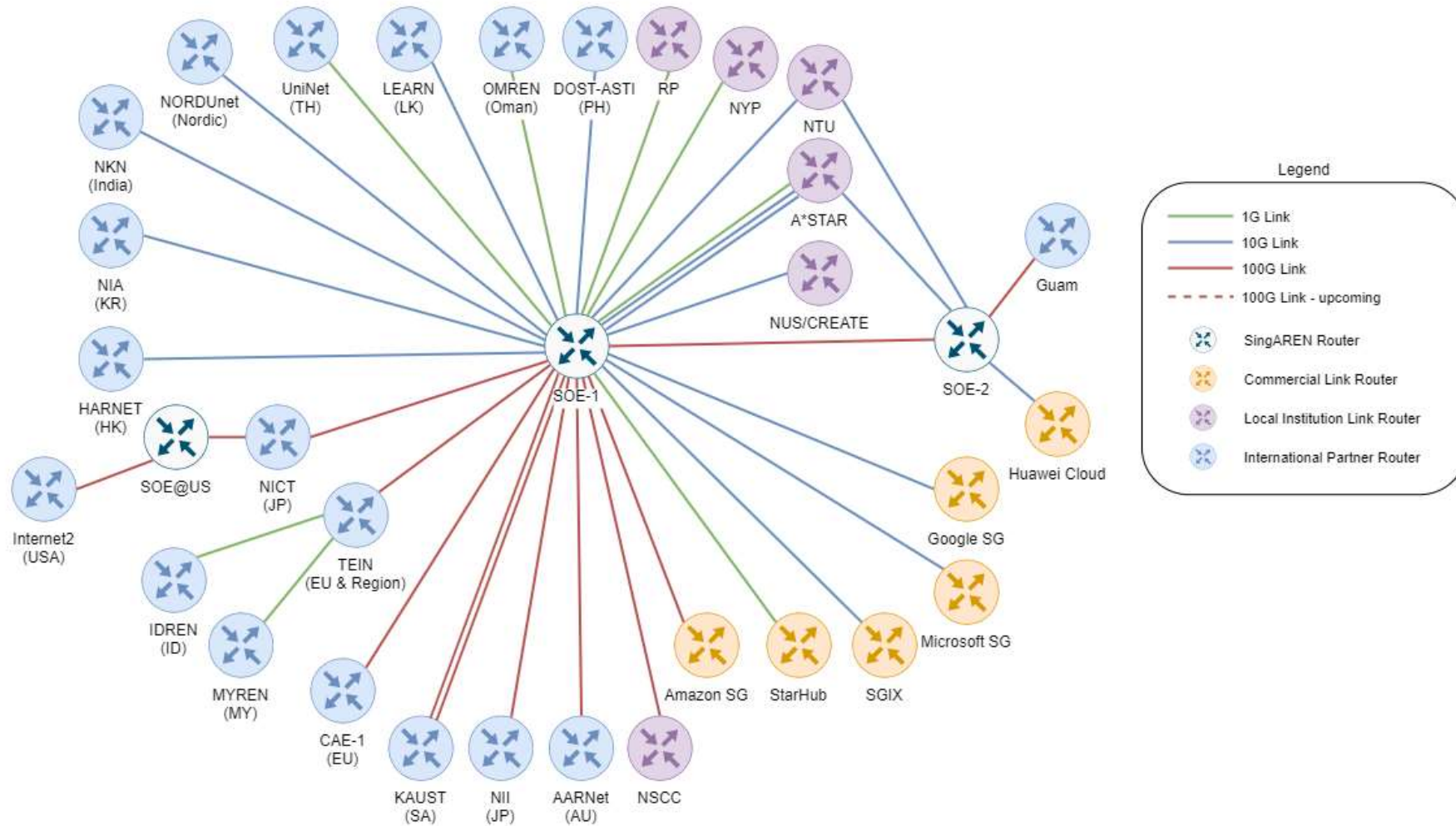


SingAREN Lightwave Internet Exchange Topology

- SLIX1.0: 2013
- SLIX 2.0: 2019
- Dual Points-of-Presence (PoPs):
 - GlobalSwitch(SOE-1)
 - Equinix (SOE-2)
- Dual homing from SLIX partner nodes to SLIX PoPs
- Secondary DC at SLIX partner campus for intra-campus resilience
- Automatic failover arising from
 - PoP disruption
 - Link breakage

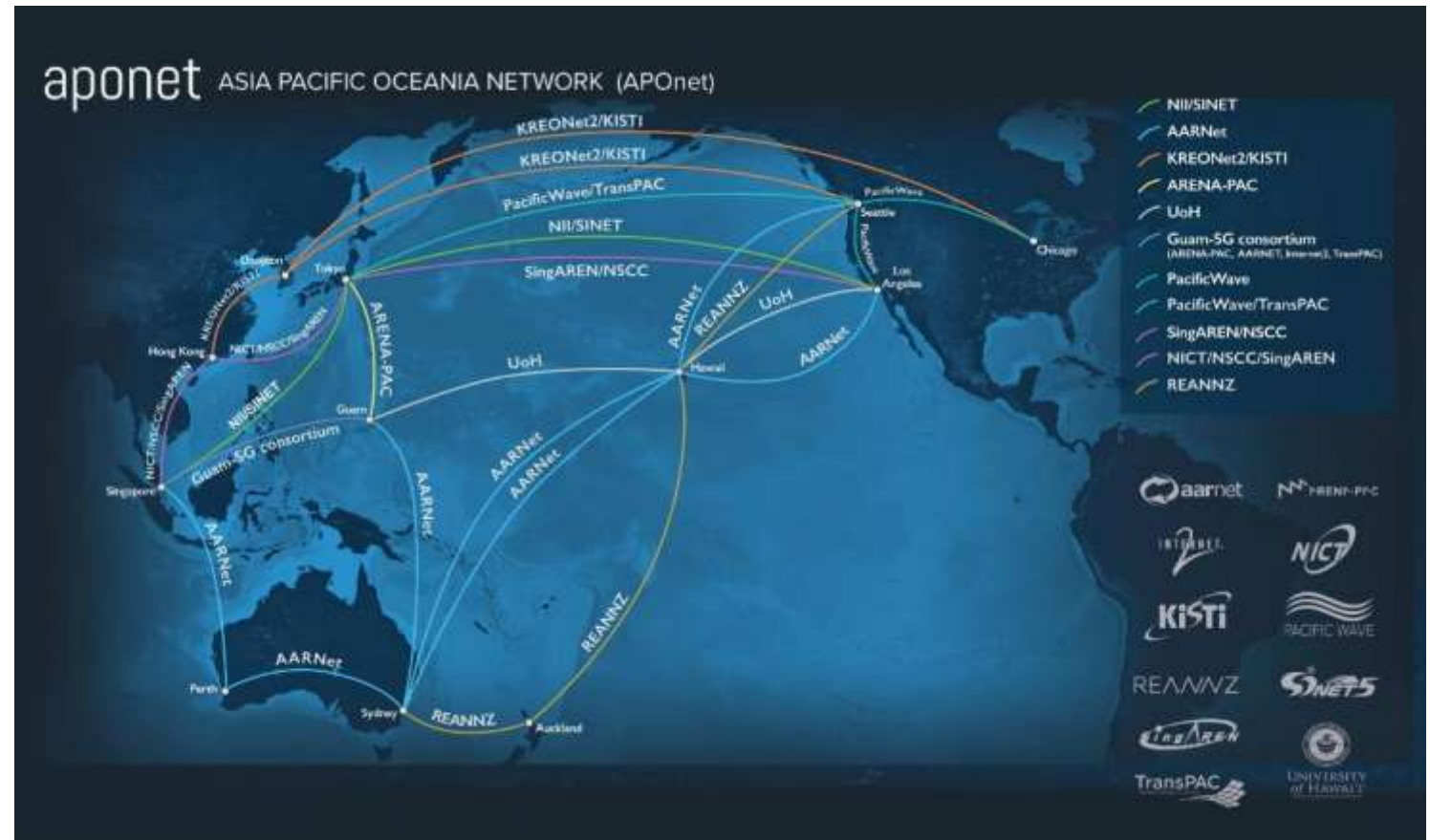


SingAREN Open Exchange – *physical topology*



International Connectivity

- **Asia-Pacific-Oceania Network (APOnet):**
 - An MoU was signed on 15 Jun 21 with the 11-partner consortium for network resilience.

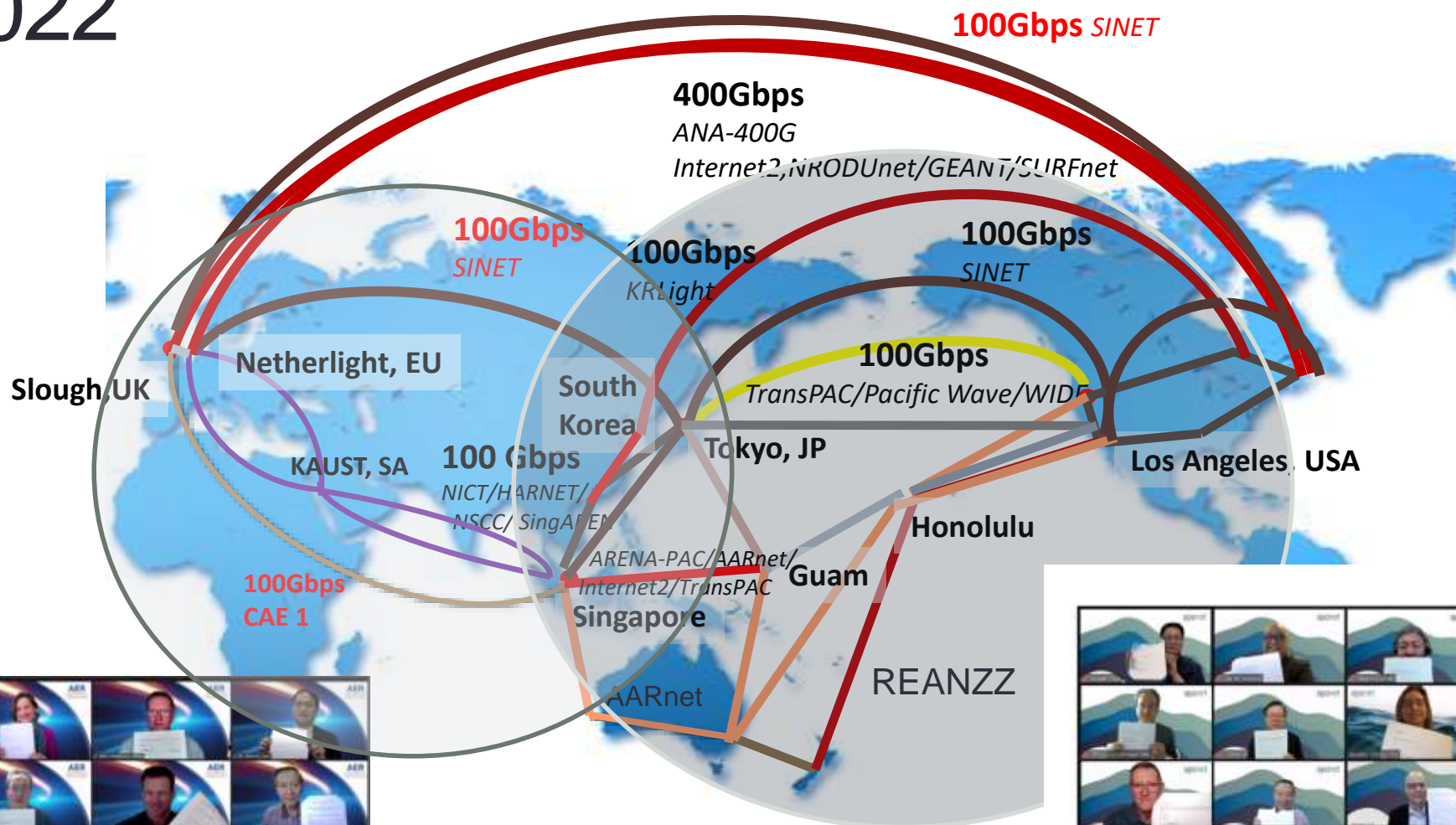


International Connectivity

- Extension of MoU for **Asia-Pacific Europe Ring (AER)**
 - 10-partner consortium for network resilience, consisting of **100G network ring** between Europe and Asia
 - New partners: HARNET(Hong Kong) and KAUST (Saudi Arabia)



2022



AER (2022)



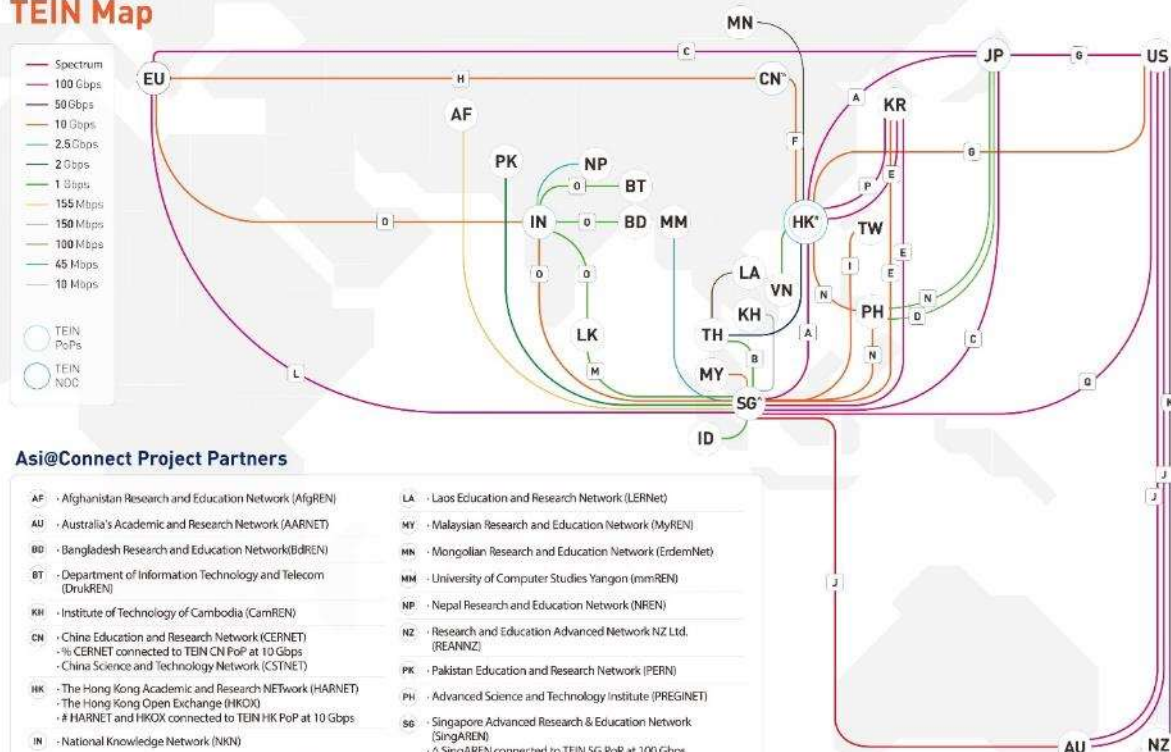
APONet (2021)





The EU co-funded Asi@Connect project provides a dedicated regional high capacity and high quality internet network, Trans Eurasia Information Network (TEIN), for Research and Education (R&E) communities across Asia-Pacific and Europe, and leverages e-infrastructures developed for public service projects.

TEIN Map



Asi@Connect Project Partners

AF - Afghanistan Research and Education Network (AfREN)	LA - Laos Education and Research Network (LERNet)
AU - Australia's Academic and Research Network (AARNET)	MY - Malaysian Research and Education Network (MyREN)
BD - Bangladesh Research and Education Network (BdREN)	MN - Mongolian Research and Education Network (ErdemNet)
BT - Department of Information Technology and Telecom (DrukREN)	MM - University of Computer Studies Yangon (mmREN)
KH - Institute of Technology of Cambodia (CamREN)	NP - Nepal Research and Education Network (NREN)
CN - China Education and Research Network (CERNET)	NZ - Research and Education Advanced Network NZ Ltd. (REANZ)
- % CERNET connected to TEIN CN PoP at 10 Gbps	PK - Pakistan Education and Research Network (PERN)
- China Science and Technology Network (CSTNET)	PH - Advanced Science and Technology Institute (PREGINET)
HK - The Hong Kong Academic and Research Network (HARNET)	SG - Singapore Advanced Research & Education Network (SingAREN)
- The Hong Kong Open Exchange (HKOX)	- ^ SingAREN connected to TEIN SG PoP at 100 Gbps
- # HARNET and HKOX connected to TEIN HK PoP at 10 Gbps	LK - Lanka Education and Research Network (LEARN)
IN - National Knowledge Network (NKN)	TW - Academia Sinica Grid Computing (ASGC)
ID - Indonesia Research and Education Network (IDREN)	TH - Thailand Research Education Network Association (ThaREN)
JP - Ministry of Agriculture, Forestry and Fisheries Research Network (MAFFIN)	VN - National Agency for Science and Technology Information (VinaREN)
- National Institute of Information and Communications Technology (NICT)	
- National Institute of Informatics (NII)	
KR - National Information Society Agency (KOREN)	
- Korea Institute of Science and Technology Information (KREONET)	

* As of December 2020.

** Other regions (Central Asia, Africa and Latin America) can be connected via global R&E networks such as EUGÉANT and USInternet2

The following links are fully financed/co-financed by the link owners whose support is gratefully acknowledged

NICT	National Institute of Information and Communications Technology
A	National Supercomputing Centre
ASIA	Singapore Advanced Research & Education Network
B	National Institute of Information and Communications Technology
	Thailand Research and Education Network
C	National Institute of Informatics
D	Ministry of Agriculture, Forestry and Fisheries Research Network
E	National Information Society Agency
F	China Education and Research Network
G	TEIN Cooperation Center
H	TransPAC/Pacific Wave
I	Co-funded by China and EU
J	Academia Sinica Grid Computing
K	Australia's Academic and Research Network
L	Research and Education Advanced Network New Zealand
M	LEARN
N	Lanka Education and Research Network
O	Advanced Science and Technology Institute
P	National Knowledge Network
Q	Korea Research Environment Open Network
	National Supercomputing Centre
	Internet2
	Singapore Advanced Research & Education Network



Possibilities with Asi@Connect

(Map as at Dec 2020)
Source:
Asi@Connect website
<https://www.tein.asia>



This publication has been produced with co-funding of the European Union for the Asi@Connect project under Grant contract ACA2018-276-562. The contents of this document are the sole responsibility of TEIN+CC and can under no circumstances be regarded as reflecting the position of the European Union.

SingAREN Services



- **Global wireless service** for secure internet connectivity across eduroam-participating institutes, through the user's home institution account and password
- Worldwide federation of RADIUS servers that facilitates network access for roaming users - available in over 100 territories and 25,000 locations worldwide
- Service is available in institutes of higher learning and research institutes in Singapore
- <https://www.singaren.net.sg/eduroam.php>



SingAREN Services

Singapore Access Federation (SGAF)

- **Federated Identity Management** authentication and authorisation system based on SAML (Security Assertion Markup Language)
- Facilitates **Single Sign-On** for online services and applications
- Convenience of using user's home organization credentials
- Institutions connected to SGAF:
 - Agency for Science, Technology and Research (A*STAR)
 - National University of Singapore (NUS)
 - Nanyang Technological University (NTU)
 - Singapore Management University (SMU)
 - Singapore University of Technology and Design (SUTD)
 - Singapore Polytechnic (SP)
 - Temasek Polytechnic (TP)
- <https://www.singaren.net.sg/SGAF-services.php>



SingAREN Services

Singapore Access Federation (SGAF)

FileSender SG

Powered by:



- Allows users to send large file attachments
- Up to 50GB per file
- Secure authenticated service

National Supercomputing Centre



- Single sign-on to NSCC facilities

SingAREN Services

Database Mirroring Service

- Enables high speed downloads of major scientific databases for Singapore's R&E community
- Relevant for users with frequent access to large overseas databases
- Examples of mirrored databases:
 - National Center for Biotechnology Information (NCBI), U.S.
 - UCSC Human Genome Browser, U.S.
 - European Bioinformatics Institute (EBI)
 - GenomeNet, Japan
- For more information, please visit <https://www.singaren.net.sg/network-services/database-mirroring/>
- To access the service, please visit <ftp://dbmirror.singaren.net.sg/>



SINGAREN EVENTS



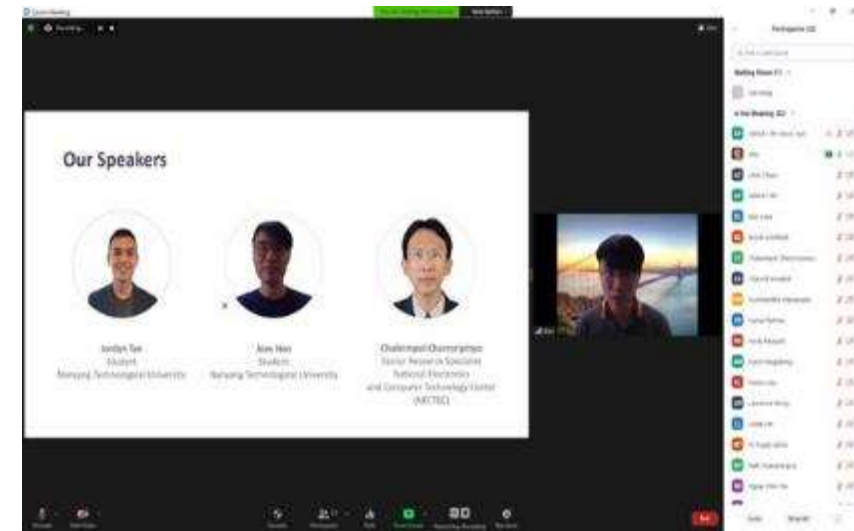
Inaugural SingAREN Virtual Roadshow: 21 May 2021

- Objectives
 - To engage the Research and Education community
 - Share case studies of benefits of connecting to SingAREN Open Exchange
 - To seek community inputs how SingAREN can enhance value to IHL/RIC institutional members in these areas:
 - Technology network infrastructure
 - Value-added services
 - Awareness building
- Keynote Speech by NUS Chief IT Officer, Ms. Tan Shui-Min
- Launch + Overview of SLIX 2.0
- Kickoff of Engagement Series with IHLs/RICs
- Over 40 participants from the community

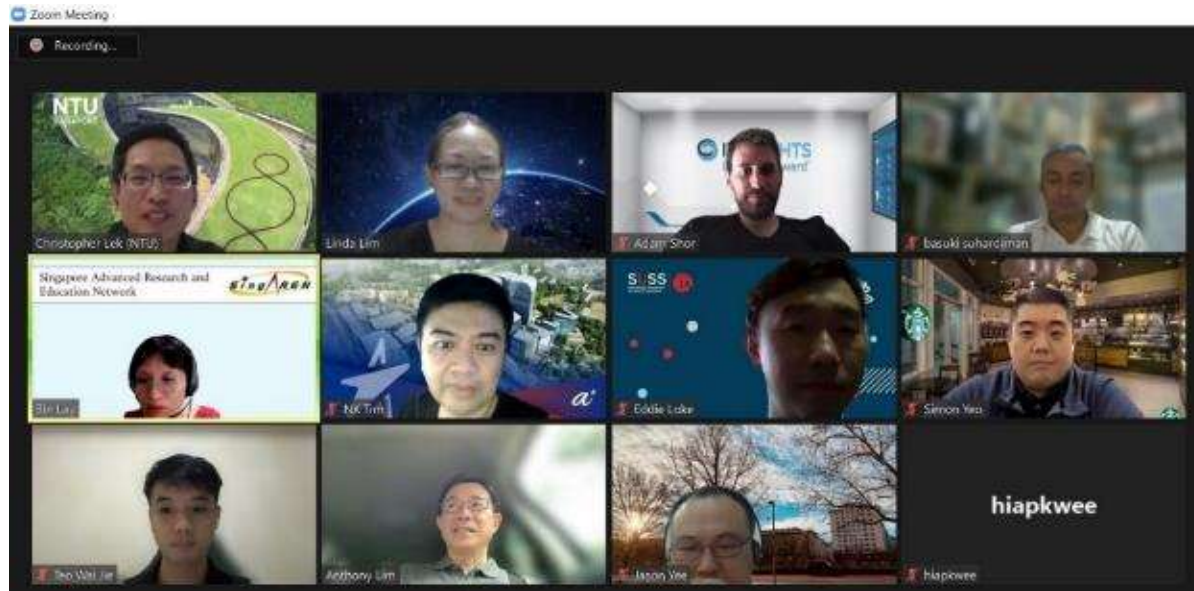


Asi@Connect DTN Project: Training Workshops: APAN51 Meeting, 3 Feb 2021

- Organised as part of the “Large Data Transfer Infrastructure and Training for Asi@Connect” project, funded by EU and managed by TEIN*CC
- **“Setting Up and Running a Globus DTN and perfSONAR Node”** by Prannoy Sablok (SingAREN):
 - 42 attendees
- **“Building a Computational Platform with Kubernetes”** jointly conducted by Jordan Tan, Alex Neo, Chalermopol Charnsripinyo, Ridnarong Promya, and Napat Chuangchunsong (NTU, SingAREN and NECTEC, Thailand):
 - 58 attendees



Cybersecurity Webinar: Leveraging on Threat Intelligence to Protect Your Research and Proprietary Data, 20 Aug 2021



- Objective: To help participants gain a better understanding of how threat intelligence can be a tool in helping to safeguard their organisations' data
- Over 20 participants from the community
- Positive feedback:
 - Participants gained a better understanding of the importance of threat intelligence
 - Raised awareness levels on cyber threats



Cybersecurity Workshop: Safeguarding Your Networks Against Modern DDoS Attacks With Award-Winning Technology, 30 June 2022



SINGAREN ACTIVITIES WORKING WITH NSCC

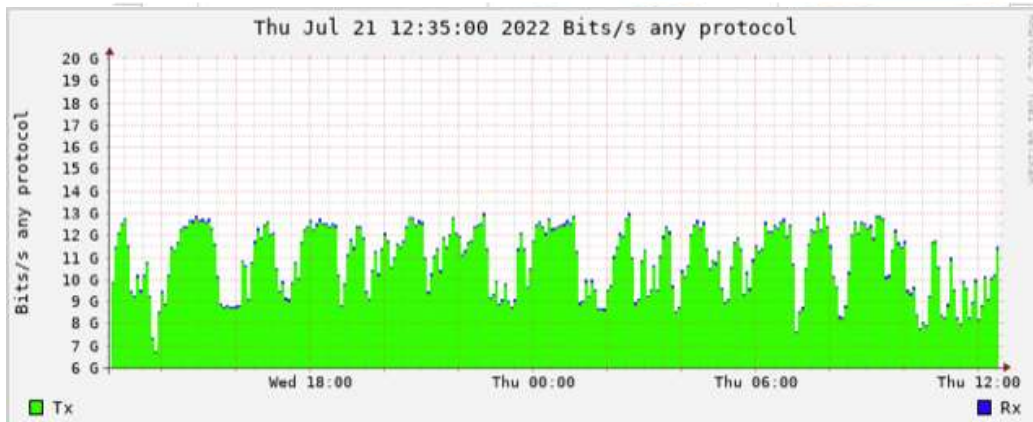
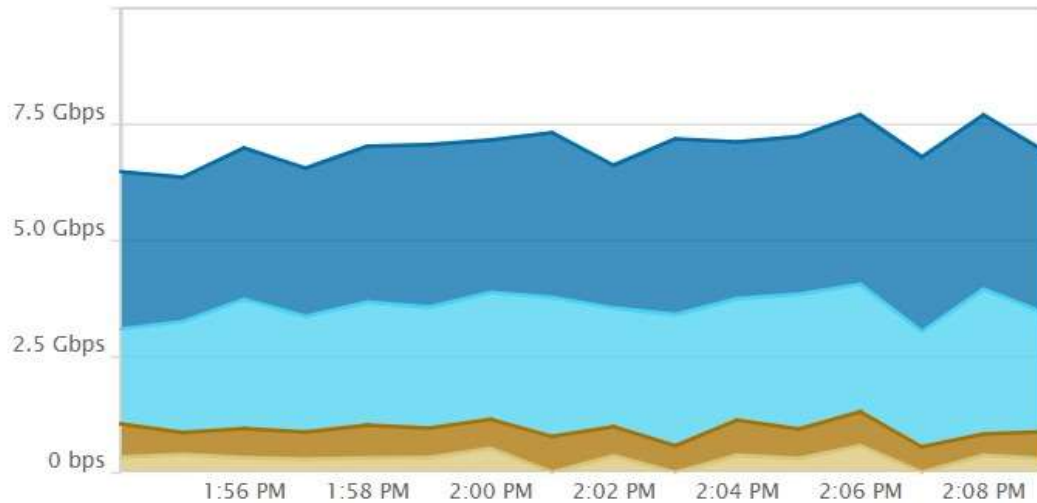


High Speed Data Transfer

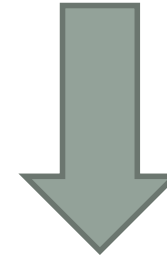
Top 20 Conversations

BOTH, LAST 15 MINUTES, RATE (KBPS)

HELP



Gadi supercomputer
NCI(AUS)



ASPIRE 2A
Singapore



Access to Fugaku

- Users in Singapore, have access to 2nd TOP500 supercomputer.
- The path from Singapore to Fugaku supercomputer, at RIKEN in Japan, is via the international links set-up by SingAREN and its partners.



Data Mover Challenge 2021 – Organised by NSCC

- SingAREN is a supporting partner for the Data Mover Challenge 2021 (DMC21) event, together with other international R&E network partners.
 - Objective: challenge international teams to come up with the most advanced and innovative solutions for data transfer across servers located in various countries, connected by 100Gbps international research and education networks.



Image credit: <https://www.nsc.sg/data-mover-challenge-2021/>

NSCC and SingAREN

- SingAREN work closely with NSCC to support its network needs.
- Local connectivity: Dark fiber support for NTU, NUS, A*STAR, etc
- International connectivity: USA, Europe, Oceania, Asia.
- PoC: QKD testing, Science DMZ, etc..



NSCC + SingAREN



THANK YOU



Q&A

